

EMBEDDED AC MONITORS

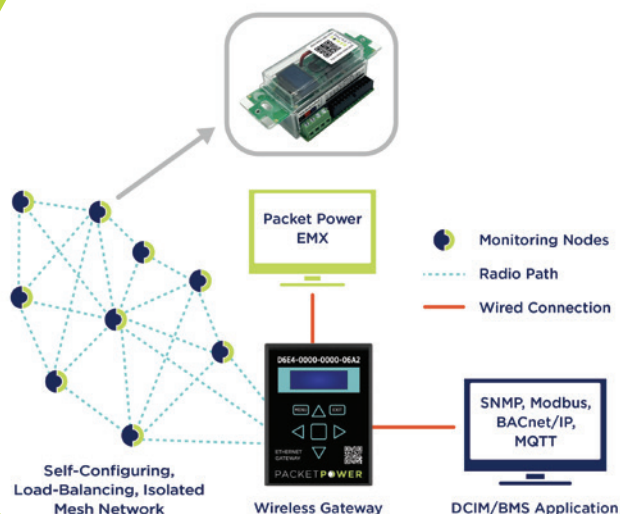
Packet Power offers a versatile range of full power meters designed to support 1 to 12 current sensors and operate seamlessly on line-powered circuits up to 480V. Select from solid core, split core, or coil sensors with a wide capacity range of 15 to 10,000 amps. Every system arrives fully configured and ready to install, significantly minimizing setup time and reducing costs.

Monitoring Made Easy®



How It Works

Simple, Seamless Integration



Arrives Pre-Configured For:

- Line-Powered Single/Three-Phase Submeter
- Ships Fully Assembled & Ready to Install
- Wide Range of Current Sensor Types & Sizes
- Multiple Enclosure Types
- Automatic Topology Detection & Instant Wireless Communications
- Designed & Built in the USA



Applications



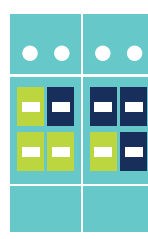
Input



Selective Circuits



ATS/STS, HVAC, & Generators



Existing Switchgear



Tenant Submetering



Data Center PUE

Embedded AC Models



MP277

Input Voltage

100-480V/277V AC

Model

MP277-3MV

MP277-6MV

MP277-12MV

MP277-12RO

Max CTs

3

6

12

12

106 x 45 x 40 mm
(4.2 x 1.8 x 1.6 in)



MP480

Input Voltage

480V or 600/347V AC

Model

MP480-D-6MV

MP480-D-6MA

MP480-D-6RO

Max CTs

6

6

6

106 x 45 x 40 mm
(4.2 x 1.8 x 1.6 in)

Need more than 12 CTs? Ask about our **Multi-Circuit Monitoring Solutions!**

Current Transformers

Split Core CTs

Inside Diameter	Rated Amperage
10 mm	15, 30, 50
16 mm	100
24 mm	100, 200, 300
36 mm	200, 300, 400, 600
50x50 mm	400, 600, 800
75x125 mm	300, 600, 800
150x150 mm	800, 1000, 1200, 1600, 2000, 3000, 4000

*Additional current ratings available

Rogowski Coils

Inside Diameter	Coil Length	Typical Amperage
68 mm	250 mm	100A to 1,000A
147 mm	500 mm	400A to 3,000A
211 mm	700 mm	1,000A to 5,000A
306 mm	1000 mm	2,000A to 10,000A

Solid Core CTs

Inside Diameter	Rated Amperage
9 mm	35
15 mm	60
32 mm	200, 400



Technical Specifications

Measurement

Measurements	Full Power: V, A, Ah, VA, W, Wh, Power Factor, Hz, IR Pulse Output
Accuracy	± 1.0% (CT Dependent); ± 0.5% Available
Input Voltages	MP277: 100-240V 1ph, 120/240 Split-Phase, 120/208V, 240/415V, 277/480V MP480: 208V 3ph LL, 480V 3ph LL
Current Range	15A to 10,000A
Frequency	50/60 Hz

Communications

Operating Frequency	860-930 MHz and 2.4 GHz (frequencies vary by region)
Wireless Network Protocol	Frequency Hopping Self-Configuring Load-Balancing Mesh
Wired Network Protocols	HTTPS to EMX running locally or as cloud service; SNMP V1/V2c/V3; TCP/IP; Ethernet/IP; BACnet/IP; Modbus
Firmware Updates	Wireless
Typical Transmission Range	10-30m Indoors Between Any 2 Devices in Mesh Network
Antenna	Fully Enclosed, Fixed Configuration
Monitoring Unit to Gateway Ratio	100 Devices Per Gateway with Unlimited Gateways Per Site
Multi-Site Support	Yes
Encryption	HTTPS; Optional 128-Bit Wireless AES
Local Display	Volts, Amps, Wh and Communications Status (Varies By Model)

Environmental + Mechanical

Operating Environment	0°-75°C (32°-167°F); 5%-95% Non-Condensing
Water & Dust Resistance	NEMA1/IP20 (Indoor Use); NEMA 4 Enclosure Available
Power Usage	Less than 1W
Certifications	UL Listed, CE, FCC Part 15 and Other Standards

*For more details, visit dox.packetpower.com/support/current/single-meter-submetering

Enclosure Options



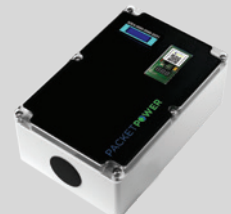
Double Deep Gangbox

114 x 114 x 67 mm
(4.5 x 4.5 x 2.625 in)



NEMA-3R

160 x 160 x 92 mm
(6.3 x 6.3 x 3.6 in)



Gateway + Meter

241 x 160 x 96 mm
(9.5 x 6.3 x 3.8 in)